

VoIP Phone C62 Quick Installation Guide



This product can be set up by using the Keypad and a Web browser such as Internet Explorer.

If you purchased this product to make a VoIP call, you must have either an Ethernet-based Cable or a DSL modem with an active connection to the Internet.

Check Your Package Contents

These are the items included with your C62 IP Phone purchase:



VoIP Phone C62



Handset



Power adaptor



Handset cord



Quick Installation Guide



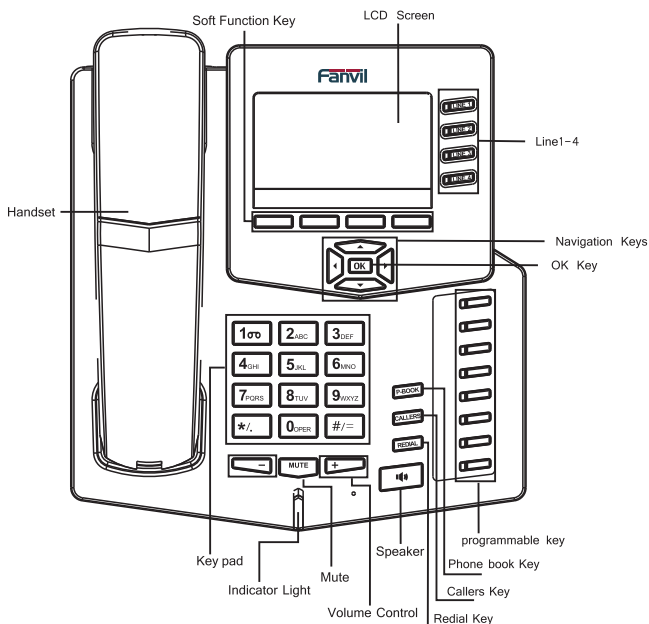
Base bracket



Ethernet Cable

2 The Appearance of Product

Front view and keypad function:

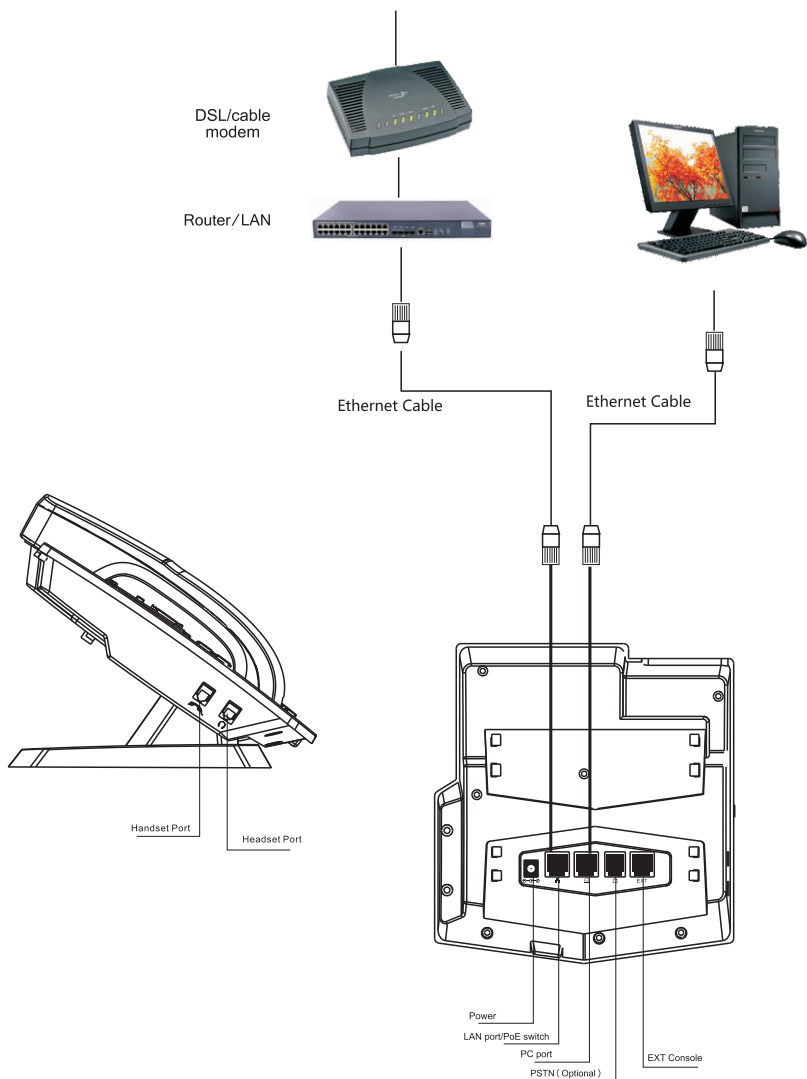


You may use alphanumeric characters when entering details (as provided by your ISP) into the ADSL ID and ADSL Password sections from a phone. This text entry is also available for phone book setting.

Text Mode			Text Mode		
Key	Normal(ABC)	Numeric(0-9)	Key	Normal(ABC)	Numeric(0-9)
1 σ		1	7 PQRS	PQRSpqrs	7
2 ABC	ABCabc	2	8 TUV	TUVtuv	8
3 DEF	DEFdef	3	9 WXYZ	WXYZwxyz	9
4 GHI	GHIghi	4	0 OPER	OPERoper	0
5 JKL	JKLjkl	5	*/.		*
6 MNO	MNOmno	6	#/=		#

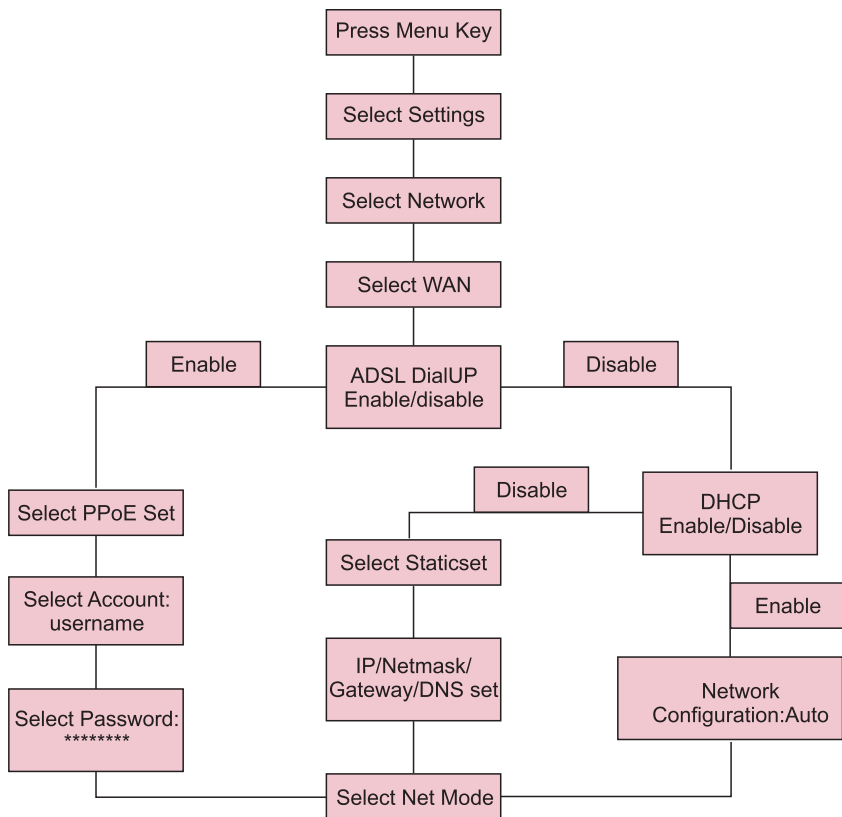
3 Connecting IP Phone

Connect the IP Phone as shown by the following diagram:



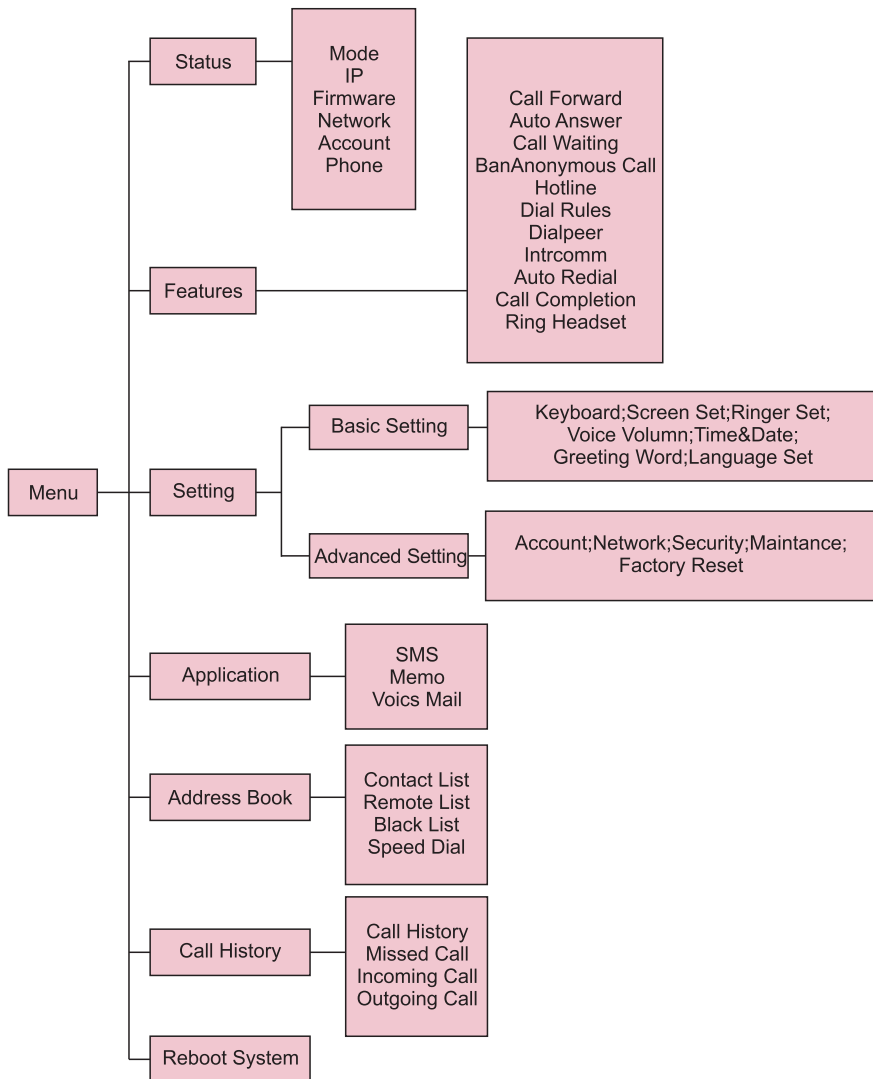
4 IP Phone Setup Menu(1)

Network mode Settings diagram:



5 IP Phone Setup Menu(2)

The menu of phone Structure:



6 Configuration(1)

Web Login

The configuration menu of C62 can be accessed using the convenient and user-friendly interface of a web browser.

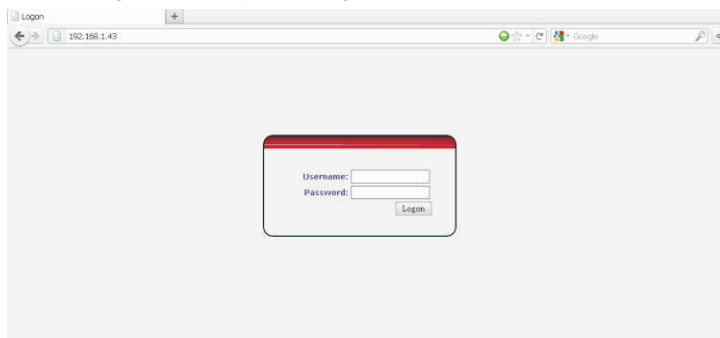


Open your web browser (Internet Explorer, firefox...)

Type in the IP address of the phone

IP address is provided by your Internet Service Provider (ISP). If your ISP supports DHCP, you may obtain the IP address from your phone. Press commensurate key-"Net" to get IP address.

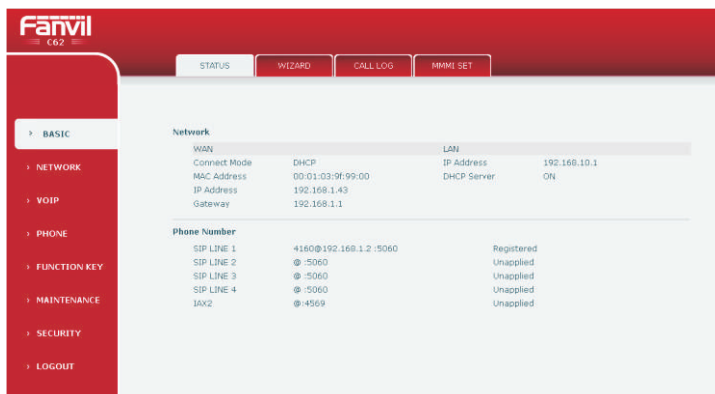
You can also login from PC port through `http://192.168.10.1`



Enter Username and password;

The default Username and password are "admin".

Please see the following screen after login. Include BASIC, NETWORK, VOIP, PHONE and so on.



7 Configuration(2)

Network - PPPoE Setting

Select Network from the main menu.

Select PPPoE as network connection type if your ISP uses PPPoE. (Most DSL users use PPPoE.)

The screenshot shows the Fanvil C62 web interface. The left sidebar contains a menu with options: BASIC, NETWORK, VOIP, PHONE, FUNCTION KEY, MAINTENANCE, SECURITY, and LOGOUT. The NETWORK option is selected. The main content area has tabs for WAN, LAN, QOS, SERVICE PORT, DHCP SERVER, and SNTP. The WAN tab is active, displaying WAN Status and WAN Setting sections.

WAN Status

Active IP	192.168.1.43
Current Netmask	255.255.255.0
Current Gateway	192.168.1.1
MAC Address	00:01:03:9f:99:00
Get MAC Time	2011-11-4

WAN Setting

Static ☐ DHCP ☐ PPPoE ☒

☒ Obtain DNS server automatically

PPPoE Server: ANY

Username: user123

Password: *****

APPLY

802.1X Setting

Username: testuser

Password: ****

Enable 802.1X: ☐

APPLY

Network - Static Setting

Select Static as network connection type if all Wide Area Network IP is provided to you by your ISP.

The screenshot shows the Fanvil C62 web interface. The left sidebar contains a menu with options: BASIC, NETWORK, VOIP, PHONE, FUNCTION KEY, MAINTENANCE, SECURITY, and LOGOUT. The NETWORK option is selected. The main content area has tabs for WAN, LAN, QOS, SERVICE PORT, DHCP SERVER, and SNTP. The WAN tab is active, displaying WAN Status and WAN Setting sections.

WAN Status

Active IP	192.168.1.43
Current Netmask	255.255.255.0
Current Gateway	192.168.1.1
MAC Address	00:01:03:9f:99:00
Get MAC Time	2011-11-4

WAN Setting

Static ☒ DHCP ☐ PPPoE ☐

☒ Obtain DNS server automatically

Static IP Address: 192.168.1.179

Netmask: 255.255.255.0

Gateway: 192.168.1.1

DNS Domain:

Primary DNS: 202.96.134.139

Alter DNS: 202.96.128.68

APPLY

802.1X Setting

Username: testuser

Password: ****

Enable 802.1X: ☐

APPLY

8 Configuration(3)

Network - DHCP Setting

Select DHCP as network connection type that allows the network administrator to distribute IP addresses when this IP Phone is plugged into a different place in the network.

Fanvil C62

WAN LAN QOS SERVICE PORT **DHCP SERVER** SNTP

BASIC NETWORK VOIP PHONE FUNCTION KEY MAINTENANCE SECURITY LOGOUT

WAN Status

Active IP: 192.168.1.43
Current Netmask: 255.255.255.0
Current Gateway: 192.168.1.1
MAC Address: 00:01:03:0F:99:00
Get MAC Time: 2011-11-4

WAN Setting

Static ☐ DHCP ☒ PPPoE ☐

☒ Obtain DNS server automatically

APPLY

802.1X Setting

Username: testuser
Password: ****
Enable 802.1x: ☐

APPLY

SIP Settings

Select SIP Settings from the main menu. The following fields such as Server Address, Server Port, Account Name, Password, and Phone Number are required. Then click Apply to register phone to SIP server.

Fanvil C62

SIP IAX2 STUN DIAL PEER

BASIC NETWORK VOIP PHONE FUNCTION KEY MAINTENANCE SECURITY LOGOUT

SIP Line Select

SIP 1 Load

Basic Setting

Register Status: Registered
Server Name:
Server Address: 192.168.1.2
Server Port: 5060
Account Name: 4160
Password: ****
Phone Number: 4160

Display Name:
Proxy Server Address:
Proxy Server Port:
Proxy Username:
Proxy Password:
Domain Realm:
Enable Register: ☒

APPLY Advanced Set

Server Address
Server Port
SIP Account Name
Password
Phone number

SIP server address
SIP server port number
Username for logging into the SIP server
Password for logging into the SIP server
SIP phone number



Make a Phone Call

IP Address:

1. Lift handset or press speaker button or press headset button.
2. Dial IP address.

For example: dialing #192*168*0*1

3. Press “#” button or wait until the timer expires to dial.

SIP Number:

Note: You have to register with SIP server to use SIP number.

1. Lift handset or press speaker button or press headset button.
2. Dial SIP number.

For example: dialing 1866

3. Press “#” button or wait until the timer expires.

